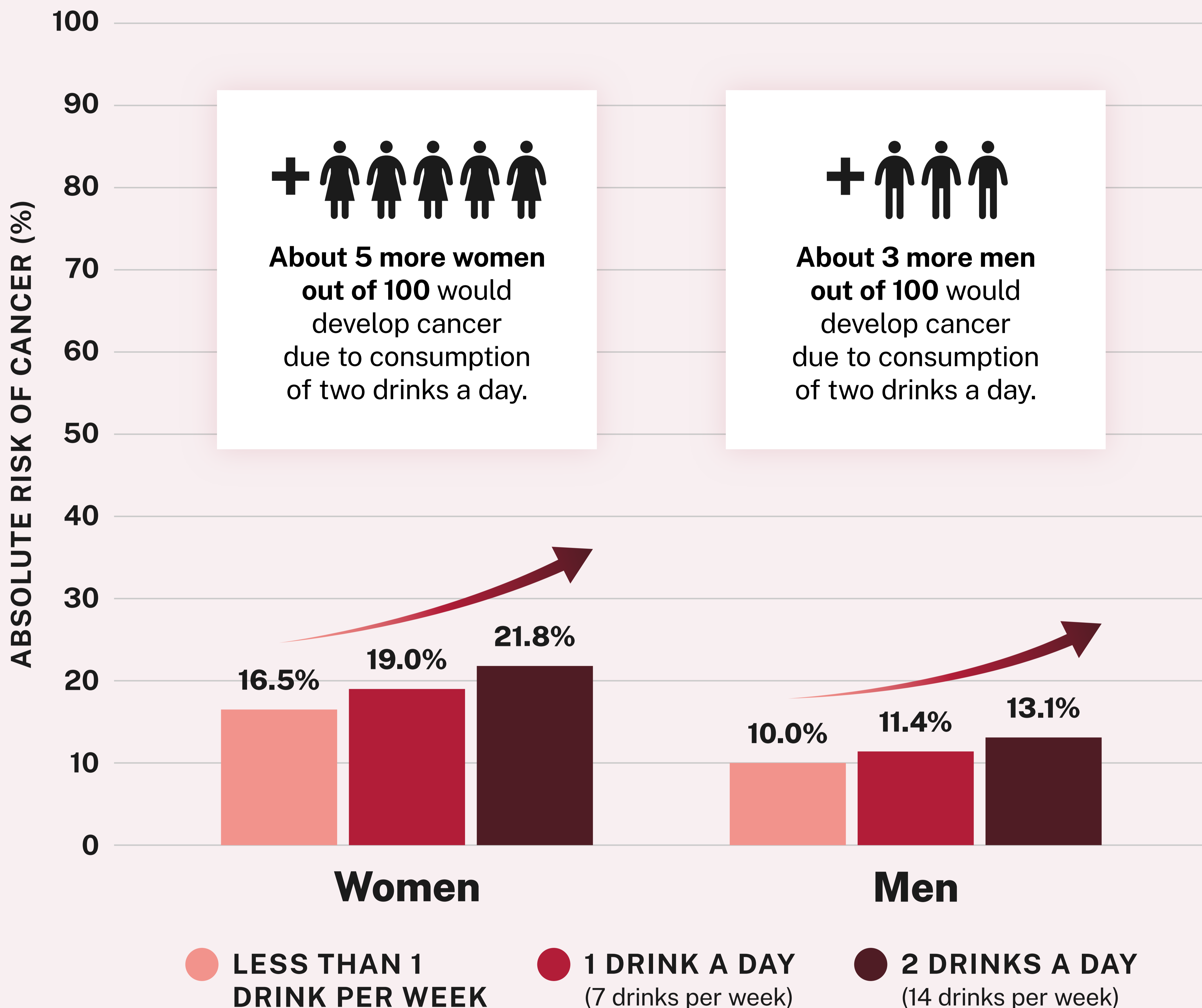


# Higher alcohol consumption increases alcohol-related cancer risk in women and men



This graph represents the cumulative absolute risk of alcohol-related cancer in women and men over the lifespan by age 80. Alcohol-related cancer includes breast, colorectum, esophagus, liver, mouth, throat, and voice box cancers.

**Source:** Calculated with data from Sarich, P., Canfell, K., Egger, S., Banks, E., Joshy, G., Grogan, P., & Weber, M. F. (2021). Alcohol consumption, drinking patterns and cancer incidence in an Australian cohort of 226,162 participants aged 45 years and over. *British journal of cancer*, 124(2), 513–523. <https://doi.org/10.1038/s41416-020-01101-2>



Office of the  
U.S. Surgeon General